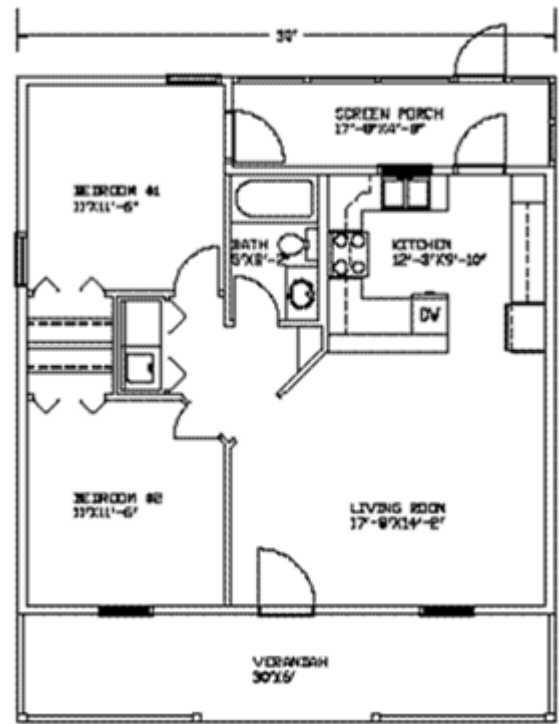




# 16 Rycktreau Drive Lac Du Bonnet Lot 22, Blk 1, Plan

## 810 SF 4 Season Cottage

- \* 17.8'x14.2 Living room with wood fireplace
- \* 12'x9.10' Eat in Kitchen w/maple cabinets
- \* 11'x11.6' Bedroom
- \* 11'x11.6' Bedroom
- \* 4 pc bath with 1 pc tub
- \* 17'x4.8' Screened Porch
- \* 30'x6' Front Veranda
- \* Double Detached garage (currently on property)
- \* Crawl space
- \* 25 year shingles
- \* 5 year home warranty
- \* Triple pane windows
- \* Vinyl sided exterior
- \* Electric baseboard heat
- \* Attic insulation R40
- \* Holding tank for sewer/private well
- \* 40 Gallon HWT



**OFFERED AT**  
**\$242,000.**  
*Incl Net GST*

MLS #1003613/ Office #RN1007 / S/C 2.5%

**Shirley Fehr**  
**Re/Max Performance Realty**  
**246 Main Street, Steinbach, MB**  
**326-4322 / 355-8770 / 784-6617**  
**shirleyfehr@shaw.ca**  
**www.shirleyfehr.ca**



“The information contained herein has been obtained from sources deemed reliable but cannot be guaranteed as to its accuracy. The buyer is advised to obtain independent verification of any information that is of material interest to them.”